

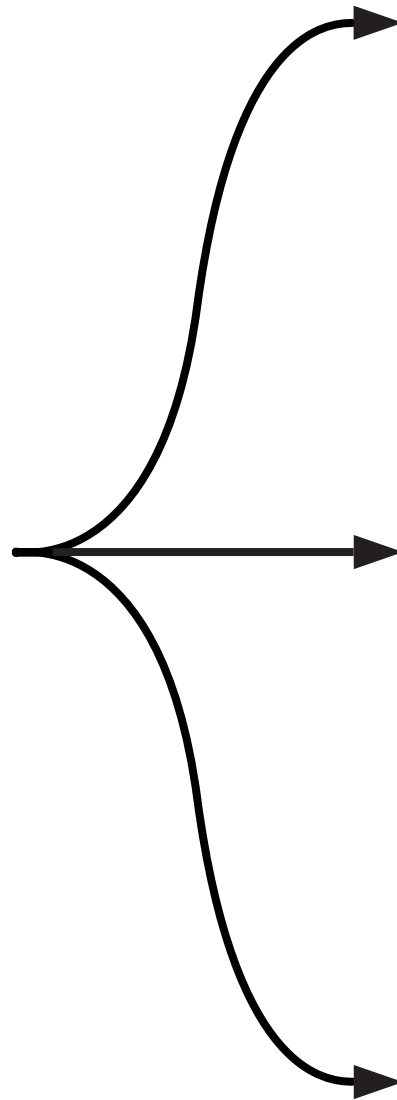
# **GETTING STARTED**

## **PXI-8211**

### **for Windows**

**Please turn  
to the correct  
section for your  
operating system**

**No CD-ROM drive?  
Please see back cover for  
alternative installation options.**



**Windows Me/98**

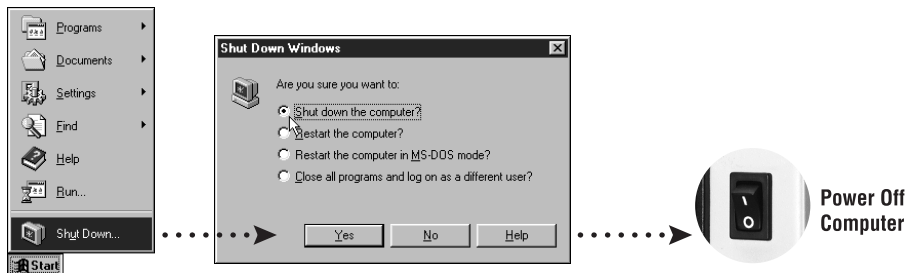
**Windows 2000**

**Windows NT 4.0**

## PXI-8211 for Windows Me/98

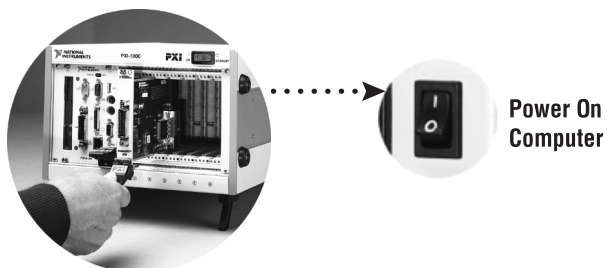
1

Shut down, then power off computer.



2

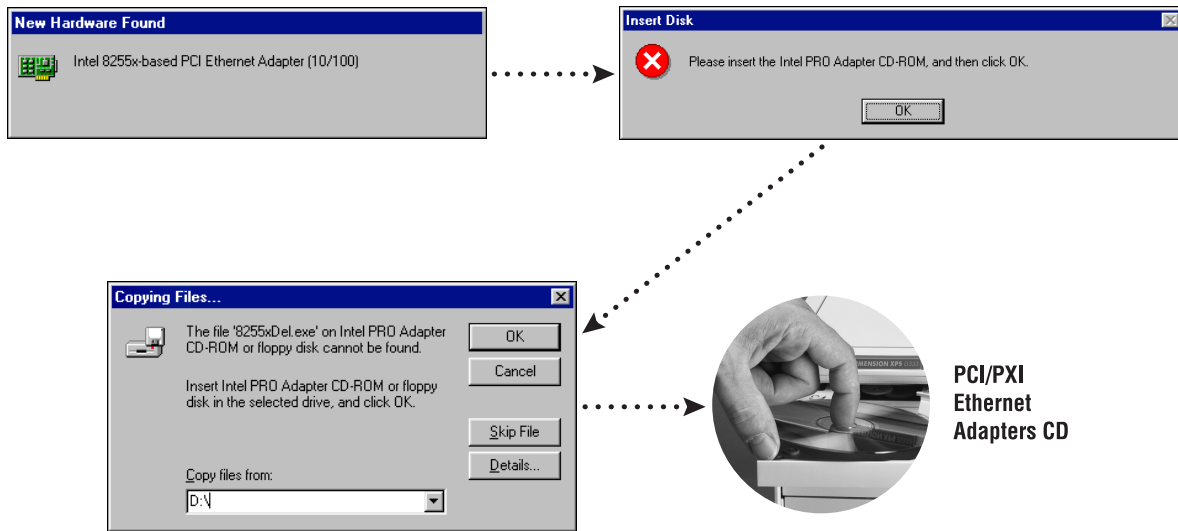
Install hardware and cables, then power on computer.



# 3 Install the Windows Me/98 Driver.

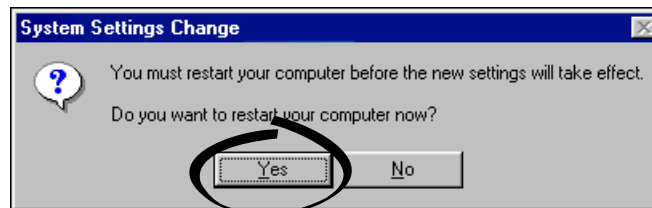
Windows Me/98 automatically finds the new card. You also may be prompted for the original Windows Me/98 CD.

**For Help** installing your driver, refer to the *PCI/PXI Ethernet Adapters Installation Guide* (available on the PCI/PXI Ethernet Adapters CD). The installation guide also contains cabling instructions and troubleshooting tips.



**Tip:** If you are using a PXI-8170 controller, you can load the Ethernet driver from `C:\images\ethernet`

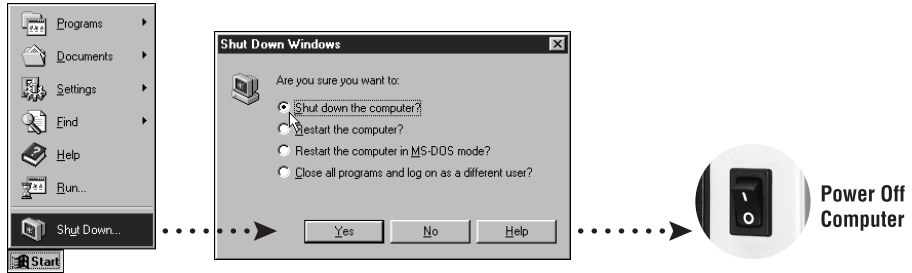
# 4 Restart computer, then connect to your network.



# PXI-8211 for Windows 2000

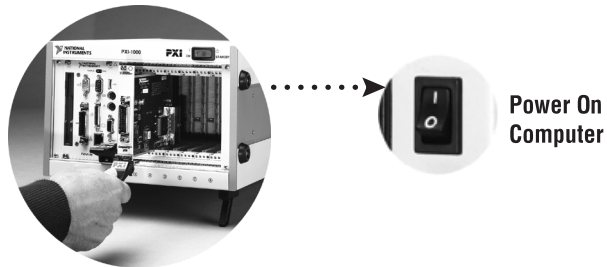
**1**

Shut down, then power off computer.



**2**

Install hardware and cables, then power on computer.

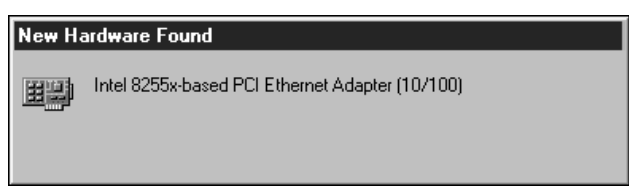


Windows 2000

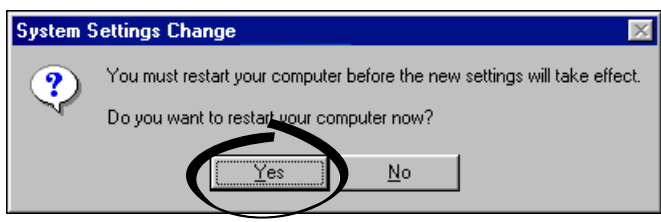
### 3 Install the Windows 2000 Driver.

Windows 2000 automatically finds the new card and installs the drivers. You also may be prompted for the original Windows 2000 CD.

**For Help** installing your driver, refer to the *PCI/PXI Ethernet Adapters Installation Guide* (available on the PCI/PXI Ethernet Adapters CD). The installation guide also contains cabling instructions and troubleshooting tips.

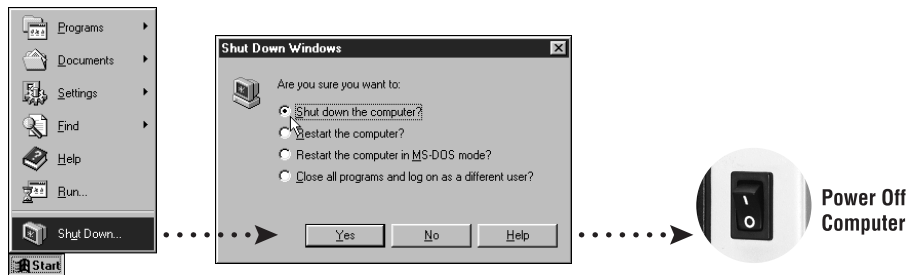


### 4 Restart computer, then connect to your network.

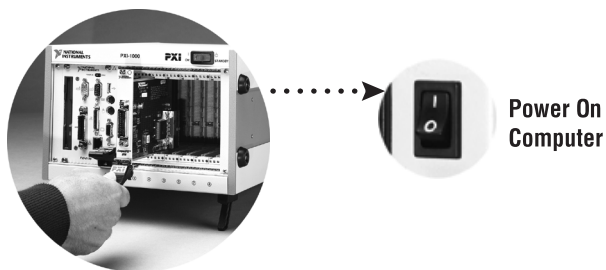


# PXI-8211 for Windows NT 4.0

**1** Shut down, then power off computer.



**2** Install hardware and cables, then power on computer.

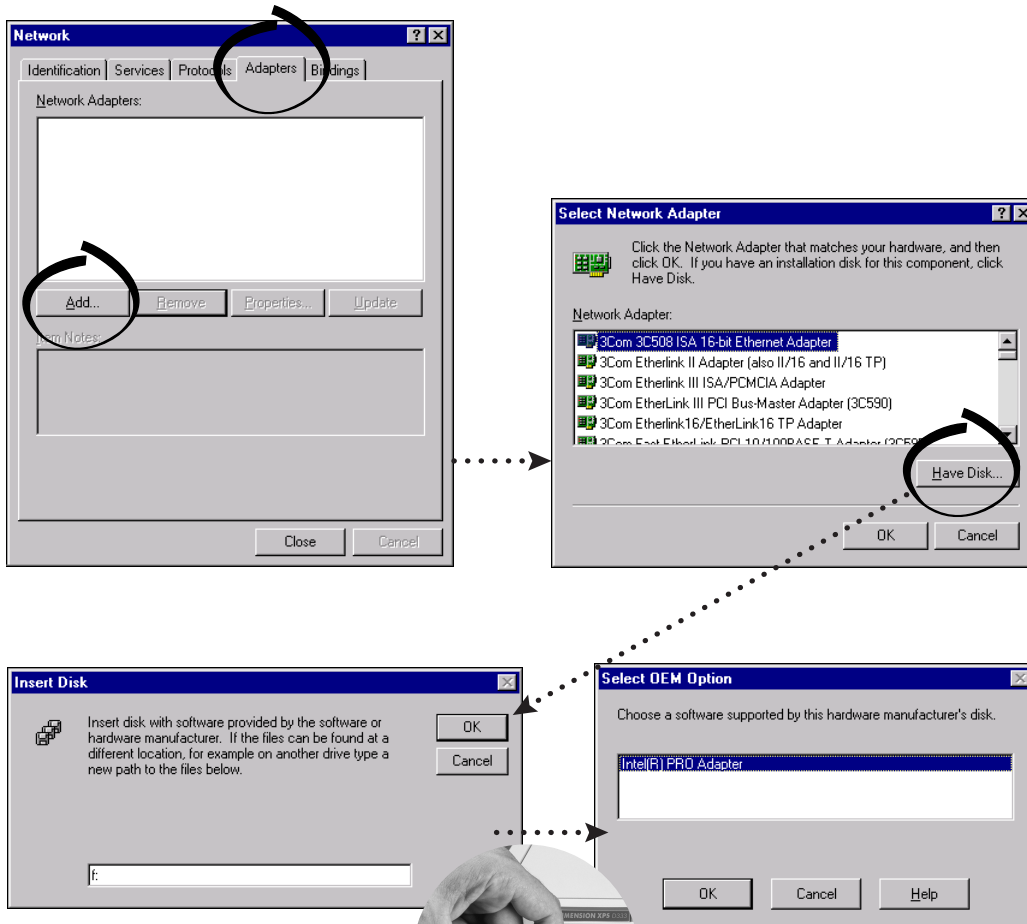


# 3

## Install the Windows NT 4.0 Driver.

Select **Start»Settings»Control Panel»Network»Adapters** and click **Add**. Click **Have Disk** and insert the PCI/PXI Ethernet Adapters CD. You also may be prompted for the original Windows NT CD.

**For Help** installing your driver, refer to the *PCI/PXI Ethernet Adapters Installation Guide* (available on the PCI/PXI Ethernet Adapters CD). The installation guide also contains cabling instructions and troubleshooting tips.

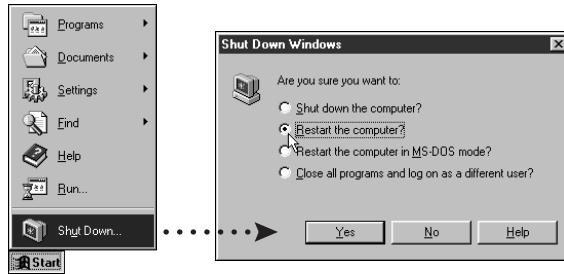


PCI/PXI Ethernet Adapters CD

**Tip:** If you are using a PXI-8170 controller, you can load the Ethernet driver from `C:\images\ethernet`

# 4

Restart computer, then connect to your network.





## Alternative Driver Installation Options for the PXI-8211

The installation instructions illustrated for each operating system in this document are appropriate for most users. However, if your PXI chassis does not contain a CD-ROM drive, try one of the following alternatives to load the Ethernet driver.

- If your PXI chassis contains a National Instruments PXI-8170 controller, the Ethernet driver is already loaded on the hard drive. When the installer prompts you for the location of the driver, you can select `c:\images\ethernet` instead of the CD-ROM. In fact, you may choose this option even if you do have an internal or external CD-ROM.
- If you have an existing Ethernet connection in your PXI chassis, download the Intel Ethernet driver from the National Instruments web site. Access the **Drivers and Downloads** page at [ni.com/download/](http://ni.com/download/)
- Connect an external CD-ROM, such as a USB CD-ROM, and load the Ethernet driver directly from the PCI/PXI Ethernet Drivers CD.
- Use another computer that has a CD-ROM to copy the Ethernet driver onto a 3.5 in. floppy disk.
  1. Open a DOS command window.
  2. Change to the `\MAKEDISK` directory on the CD-ROM.
  3. Type: `MAKEDISK [operating system] [destination (optional; A: if not specified)]` where `[operating system]` is the OS family you want to use with the diskette.
    - W2K = Microsoft Windows 2000
    - NT = Microsoft Windows NT
    - W9X = Microsoft Windows Me/98/95
    - NW = Novell NetWare servers and clients
    - DOS = Microsoft DOS and IBM OS/2



[ni.com/support](http://ni.com/support)  
[ni.com/ask](http://ni.com/ask)

